



### 混合纖維過濾膜 Code A: Mixed Cellulose Ester

• Plain White, 100張/盒。

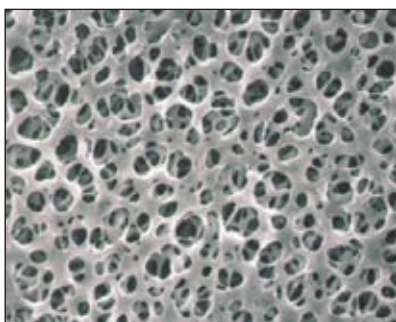
• Plain White, 25張/盒。

孔徑 (µm)	直徑			
	13 mm	25 mm	37mm	47 mm
0.10	A010A013A	A010A025A	A010A037A	A010A047A
0.20	A020A013A	A020A025A	A020A037A	A020A047A
0.30	A030A013A	A030A025A	A030A037A	A030A047A
0.45	A045A013A	A045A025A	A045A037A	A045A047A
0.65	A065A013A	A065A025A	A065A037A	A065A047A
0.80	A080A013A	A080A025A	A080A037A	A080A047A
1.00	A100A013A	A100A025A	A100A037A	A100A047A
3.00	A300A013A	A300A025A	A300A037A	A300A047A
5.00	A500A013A	A500A025A	A500A037A	A500A047A

孔徑 (µm)	直徑		
	90 mm	142 mm	293 mm
0.10	A010A090C	A010A142C	A010A293C
0.20	A020A090C	A020A142C	A020A293C
0.30	A030A090C	A030A142C	A030A293C
0.45	A045A090C	A045A142C	A045A293C
0.65	A065A090C	A065A142C	A065A293C
0.80	A080A090C	A080A142C	A080A293C
1.00	A100A090C	A100A142C	A100A293C
3.00	A300A090C	A300A142C	A300A293C
5.00	A500A090C	A500A142C	A500A293C

### 醋酸纖維過濾膜 Code C: Cellulose Acetate

• Plain White, 100張/盒。



Cellulose Acetate

孔徑 (µm)	直徑			
	13 mm	25 mm	37mm	47 mm
0.20	C020A013A	C020A025A	C020A037A	C020A047A
0.45	C045A013A	C045A025A	C045A037A	C045A047A
0.80	C080A013A	C080A025A	C080A037A	C080A047A
3.00	C300A013A	C300A025A	C300A037A	C300A047A

• Plain White, 25張/盒。

孔徑 (µm)	直徑		
	90 mm	142 mm	293 mm
0.20	C020A090C	C020A142C	C020A293C
0.45	C045A090C	C045A142C	C045A293C
0.80	C080A090C	C080A142C	C080A293C
3.00	C300A090C	C300A142C	C300A293C

### 其他過濾膜 Other Membrane Filters

我們有多款其他種類過濾膜, 歡迎來電洽詢。



Pure Nitrocellulose and Blotting Paper

- 純PTFE過濾膜 Code T : Hydrophobic PTFE Membrane
- 疏水性PTFE過濾膜 Code J : Hydrophobic PTFE Membrane, Supported
- 親水性PTFE過濾膜 Code H : Hydrophilic PTFE Membrane
- 微生物分析過濾膜 Membrane Filter for Microbiology
- Code S : Pure Nitrocellulose for Blotting and Hybridization